

# Our School Health Services

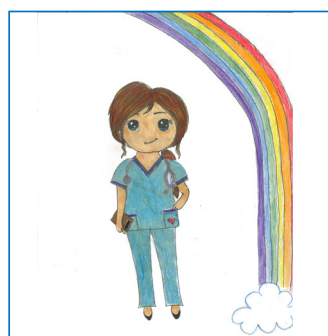


**Mersey Care**  
NHS Foundation Trust

Community and Mental Health Services

We are health professionals who work closely with children, young people, carers and school staff to promote health and wellbeing in accordance to the healthy child programme (5 to 19 years and up to 25 years for pupils with special educational needs).

## Our staff wear a uniform:

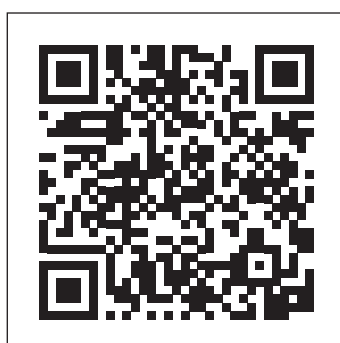


## Do you have any concerns about your child's health or development?

- Worried about night wetting?
- Behaviours or sleep patterns?
- Want to know more about healthy lifestyles and relationships for you and your child?

Our school health portals have lots of information regarding these and many more areas of child health and development.

**You can visit our primary school health portal by scanning the QR code below:**



## Primary school portal

[www.merseycare.nhs.uk/primary-school-health](http://www.merseycare.nhs.uk/primary-school-health)