

Booker Avenue Junior School

Year 6

Paris and Disneyland 2026

1st – 5th June



Disneyland[®]
PARIS

Who is Going?

- 38 children
- Mr Thompson
- Mrs Moody
- Miss Byrne
- Mrs Parkes

Travel





Monday 1st June

05:45 Arrive at school

06.15 Depart school by coach

12.15 Arrive Folkestone Eurotunnel Terminal.

13.50 Depart Folkestone

15.25 Arrive Calais

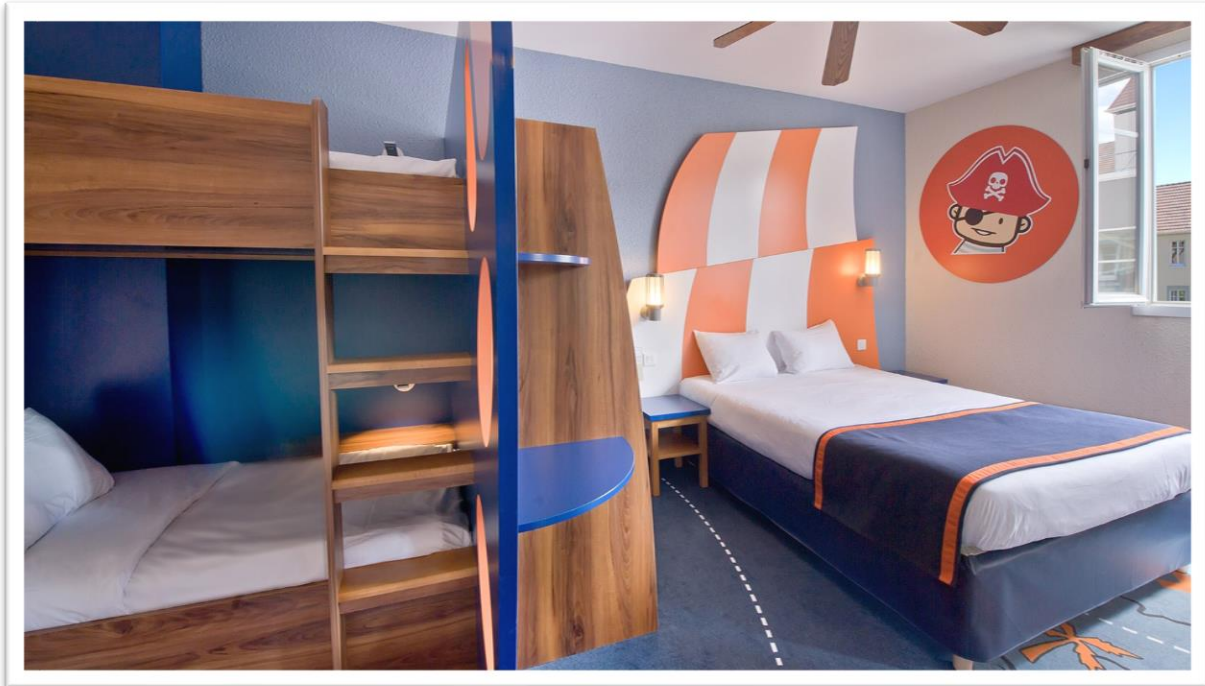
19.30 Arrive hotel and check in.

20.30 Evening meal in hotel

Rest stops are made along the way.

Explorers Hotel





Meals



Tuesday 2nd June

07.30 – 08:00 Continental breakfast at hotel

09.00 Depart hotel by coach for central Paris

11. 30 Arrive central Paris for sightseeing

Visit to **Sacre Couer**

Free time for lunch and our own activities

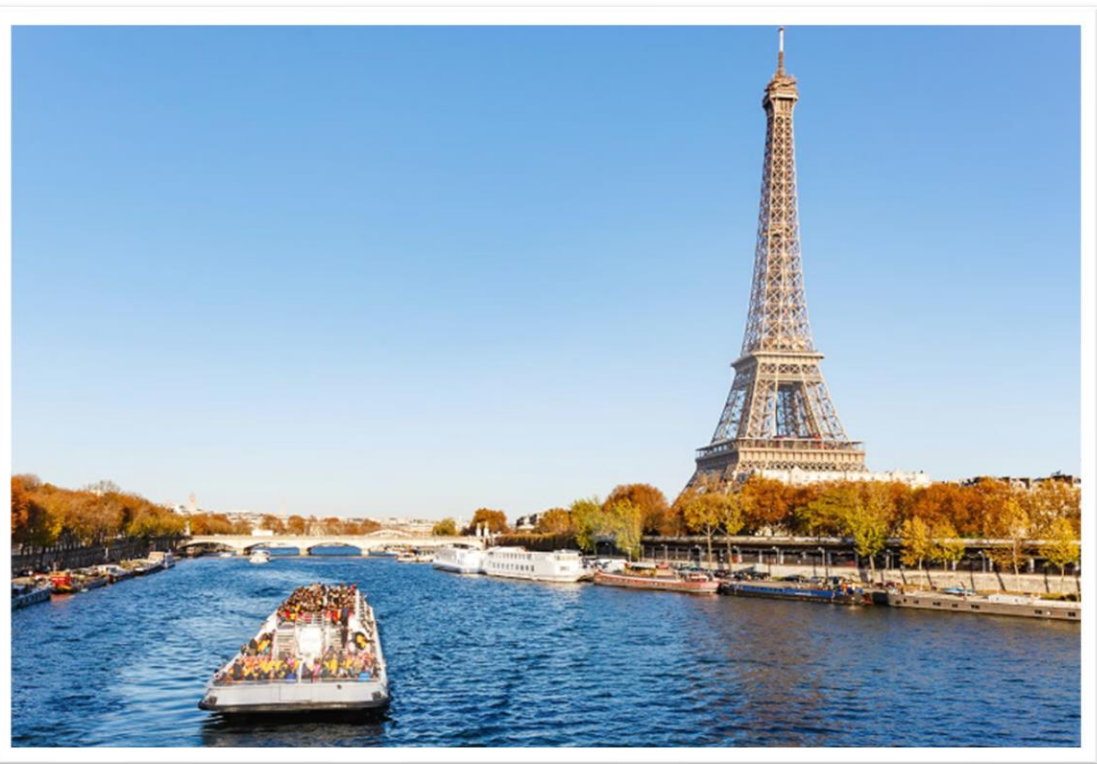
14.30 Transfer to **Bateaux Mouches River cruise**

Cruises depart from Pont de l'Alma and last approximately 80 minutes

16.30 Depart Paris for return to hotel

19.30 Evening meal in hotel followed by shopping in Disney Village









Wednesday 3rd June

07.00 – 08.00 Continental breakfast at hotel

Whole Day in Disneyland Parks

Packed lunch

19:30 Evening meal in hotel



Disneyland
PARIS

WORLD OF
FROZEN

.....<< Spring 2026 >>.....



Thursday 4th June

- **07.00 – 09.00** Continental breakfast at hotel
- Whole Day in Disneyland Parks (Studios)
- Packed lunch
- Evening meal at one of the Disney food outlets
- Evening back in the parks and fireworks
- **Midnight:** Depart for onward journey to Calais with comfort stops en-route





Friday 5th June

- **05.15** Arrive Calais
- **06.50** Depart Calais
- **06.25** Arrive Folkestone

- **12.30** Arrive school

Kit List

- Rucksack / back pack (not too large as is to be carried daily)
- Light weight Waterproof coat
- Sweatshirts / light weight pullovers / long sleeved top / hoodies
- 6-8 T-Shirts (at least 2 with collars)
- 2 pairs of comfortable trainers/shoes
- Socks
- Trousers/leggings
- 1 small towel
- Plenty of underwear
- Shorts
- Pyjamas
- Toilet bag and washing gear
- Baseball cap/ headgear to protect from sun. (School are providing)
- Sun protection cream.
- Water bottle (refillable)
- Camera (not an expensive one)
- Pillow / travel pillow for the journey
- Books, comics, magazines, cards, for the journey.

Children are not permitted to bring mobile phones.

Also, for the outward journey:

- Packed breakfast
- Packed lunch

Spending money:

- 80-100 Euros suggested
- £10 - £15 for return journey breakfast
- Euros and £s should be in separate envelopes clearly labelled with your child's name

- Passports
- Groups
- Rooming – 4 or 5 in a room, children will be told their rooms on arrival
- Safety and security
- Medical needs – please complete the form and bring it with your child's medication on the morning of departure.
- Rides and attractions
- Updates – texts, website

Questions